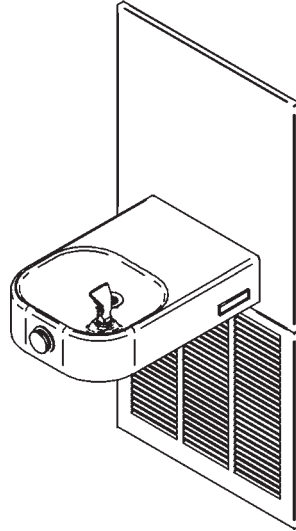


Halsey Taylor Owners Manual

Refrigerated Fountain with Back Panel



HCRF - ER

Installer

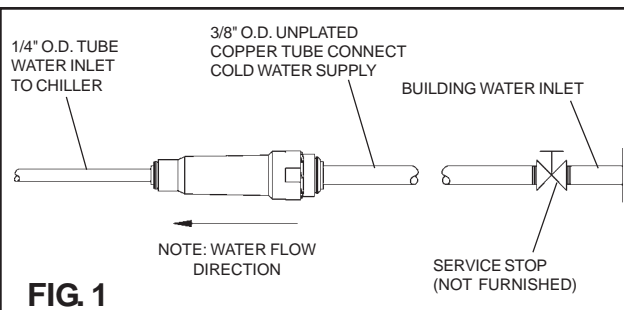
To assure you install this model easily and correctly, PLEASE READ THESE SIMPLE INSTRUCTIONS BEFORE STARTING THE INSTALLATION. CHECK YOUR INSTALLATION FOR COMPLIANCE WITH PLUMBING, ELECTRICAL AND OTHER APPLICABLE CODES. After installation, leave these instructions inside the fountain for future reference.

IMPORTANT

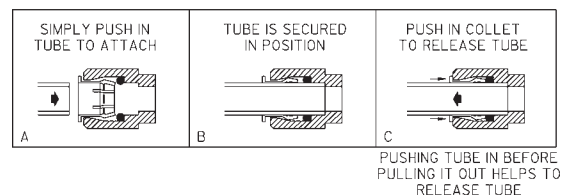
ALL SERVICE TO BE PERFORMED BY AN AUTHORIZED SERVICE PERSON

IMPORTANT! INSTALLER PLEASE NOTE.

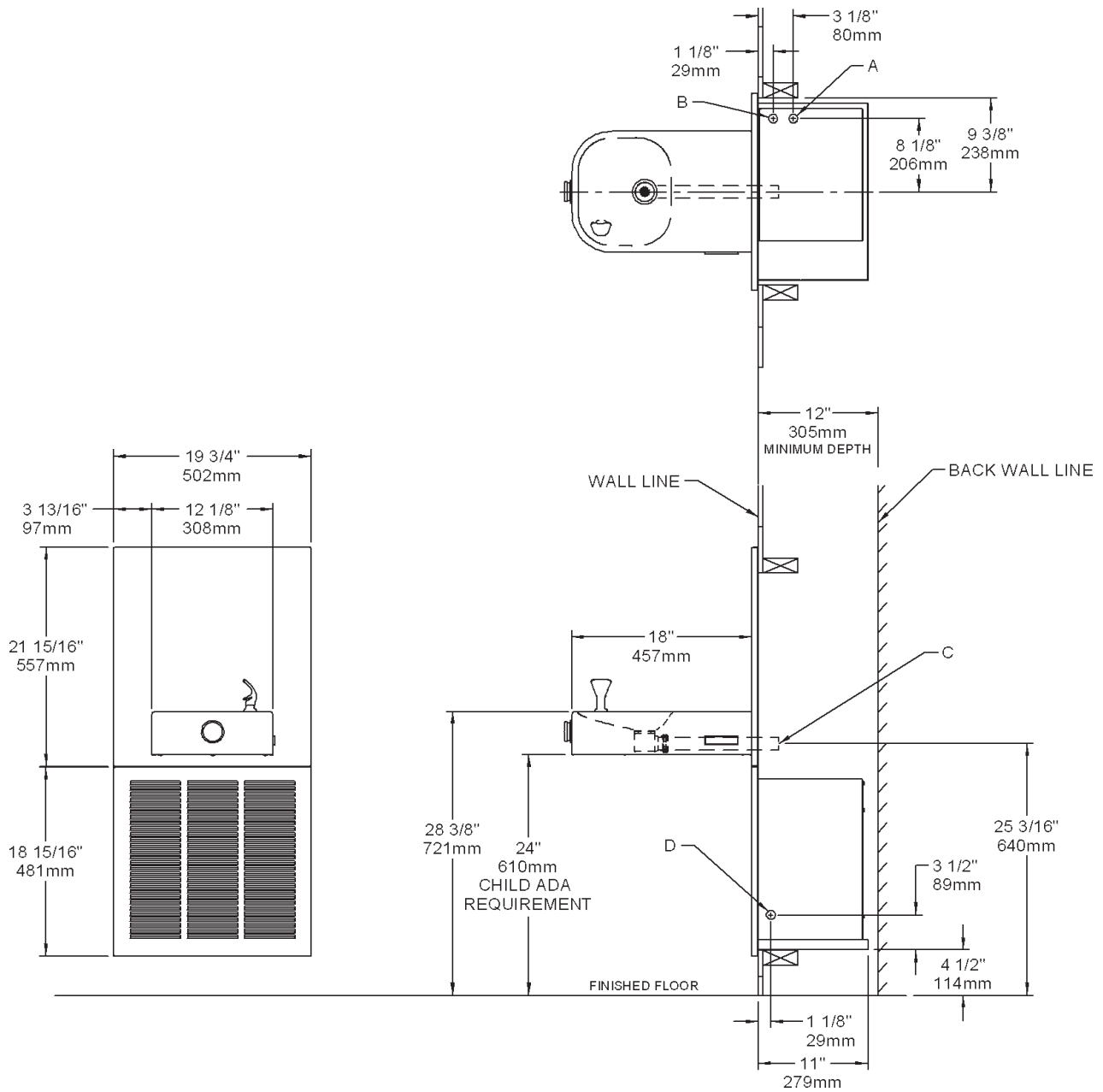
THE GROUNDING OF ELECTRICAL EQUIPMENT SUCH AS TELEPHONE, COMPUTERS, ETC. TO WATER LINES IS A COMMON PROCEDURE. THIS GROUNDING MAY BE IN THE BUILDING OR MAY OCCUR AWAY FROM THE BUILDING. THIS GROUNDING CAN CAUSE ELECTRICAL FEEDBACK INTO A FOUNTAIN, CREATING AN ELECTROLYSIS WHICH CAUSES A METALLIC TASTE OR AN INCREASE IN THE METAL CONTENT OF THE WATER. THIS CONDITION IS AVOIDABLE BY USING THE PROPER MATERIALS AS INDICATED. ANY DRAIN FITTINGS PROVIDED BY THE INSTALLER SHOULD BE MADE OF PLASTIC TO ELECTRICALLY ISOLATE THE FOUNTAIN FROM THE BUILDING PLUMBING SYSTEM.



OPERATION OF QUICK CONNECT FITTINGS



HCRF-ER ROUGH-IN

**LEGEND:****A = 1/4" O.D. TUBE - WATER OUTLET CONNECTION****B = 3/8" O.D. TUBE - WATER INLET CONNECTION****C = 1-1/4" O.D. WASTE TUBE****D = ELECTRICAL INLET ON CHILLER****FIG. 3**

HCRF - ER COOLER INSTALLATION

1. Install remote chiller. Remove front panel of chiller. **Remove and discard cardboard inner pack from between compressor and side panel.** Slide chiller onto the shelf and position it to the left within the guides on the shelf.
NOTE: Building construction must allow for adequate air flow on both sides, top, and back of chiller. A minimum of 4" (102mm) on both sides and top are required. See chiller instructions for additional instructions.
2. Make water supply connections. The inlet port is marked on the chiller (1/4" O.D. copper tube). Bend the copper tube (provided) at an appropriate length from chiller to opening in frame. Install the in-line strainer (provided with chiller) by pushing it in until it reaches a positive stop, approximately 3/4" (19mm) on the marked chiller inlet port. Attach an unplated and deburred copper water inlet line and a service stop (not provided) to the in-line strainer. Turn on the water supply and flush the line thoroughly. **DO NOT SOLDER TUBES WHILE INSERTED INTO THE STRAINER AS DAMAGE TO THE O-RINGS MAY RESULT.** (See Fig. 4)
3. Hang the upper panel on the mounting frame hanger. Align holes in the panel with the holes in the mounting frame.
Be sure that panel is engaged with hanger at top of frame before releasing it.
4. Install the fountain. Remove access cover plate on underside of fountain and save the screws. Mount the fountain to the upper panel and the wall frame with (4) 5/16" x 3/4" (19mm) long bolts and nuts (provided). Tighten securely.
5. Insert waste tube (provided) into drain on fountain. Attach waste tube (1 1/4" O.D.) to 1 1/4" O.D. slip trap (provided by others).
6. Make connections between remote chiller outlet tube and fountain. Outlet port is marked on the chiller (1/4" O.D. copper tube). Install a 1/4" union (provided) on the marked chiller outlet port. Insert the 1/4" poly tubing coming from the fountain into the union. Turn on the water supply and check for leaks. **DO NOT SOLDER TUBES WHILE INSERTED INTO THE UNION AS DAMAGE TO THE O-RINGS MAY RESULT.** (See Fig. 4)
7. These products are designed to operate on 20-105 PSIG supply line pressure. If inlet pressure is above 105 PSIG, a pressure regulator must be installed in the supply line. Any damage caused by reason of connecting these products to supply line pressures lower than 20 PSIG or higher than 105 PSIG is not covered by warranty.
8. Make electrical connections to the chiller. See chiller instructions.
9. Check stream height from bubbler. Stream height is factory set at 35-40 PSI. If supply pressure varies greatly from this, remove items 3 & 4 and adjust the screw on regulator (Item 8). Clockwise adjustment will raise stream height and counter-clockwise will lower stream height. For best adjustment stream height should be approximately 1 1/2" (38mm) above the bubbler guard. (See Figure 6)
10. Mount lower panel. Loosen the (2) #10-24 x 5/8" (16mm) screws at frame bottom lip. Slide upper tongue of lower panel under lower edge of already installed upper panel. Tighten previously loosened screws securely.
11. Replace bottom access panel to fountain basin using screws provided. Tighten securely.

TROUBLE SHOOTING AND MAINTENANCE

1. **Orifice Assy:** Mineral deposits on orifice can cause water flow to spurt or not regulate. Mineral deposits may be removed from orifice with a small round file not over 1/8" diameter or a small diameter wire.
CAUTION: Do not file or cut orifice materials.
2. **Stream Regulator:** If orifice is clean, regulate flow as in "START UP" instructions. If replacement is necessary, see parts list for correct regulator part number.
3. **Actuation of Quick Connect Water Fittings:** Cooler is provided with lead-free connectors which utilize an o-ring water seal. To remove tubing from the fitting, relieve water pressure, push in on the gray collar while pulling on the tubing (See Fig. 2) To insert tubing, push tube straight into the fitting until it reaches a positive stop, approximately 3/4".

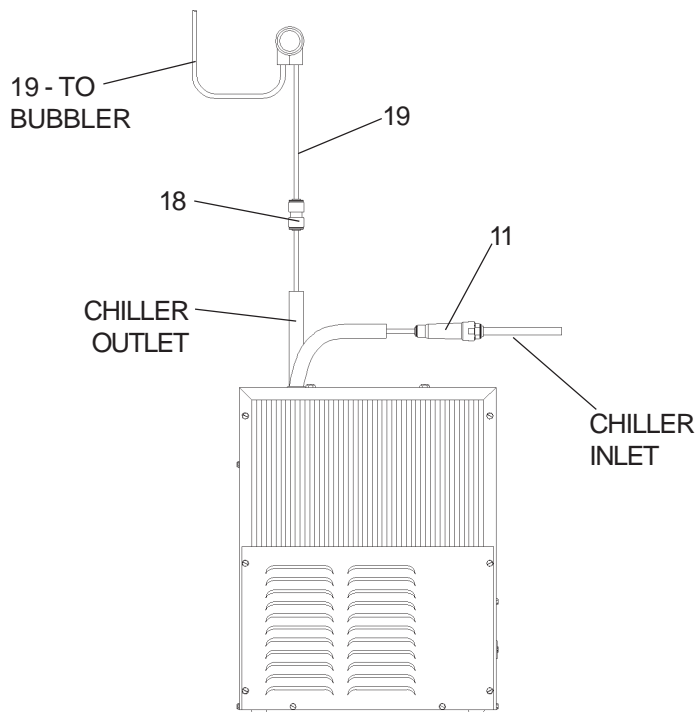


FIG. 4

HCRFERQ - B

| PARTS LIST | | |
|------------|--------------|-----------------------------|
| ITEM NO. | PART NO. | DESCRIPTION |
| 1 | 40575C | Strainer |
| 2 | 15005C | Retaining Nut |
| 3 | 45662C | Push Button |
| 4 | 45737C | Push Button Sleeve |
| 5 | 50986C | Regulator Holder |
| 6 | 51544C | Bubbler |
| 7 | 56159C | Bubbler Nipple Assy |
| 8 | 61313C | Regulator |
| 9 | 70022C | Set screw - #6-32 x .31" |
| 10 | 112627543890 | Screw - #10-24 X .50 PHTC |
| 11 | 55996C | Strainer |
| 12 | 55001129 | Fountain Arm |
| 13 | 55000665 | Bottom Cover Plate |
| 14 | 28280C | Back Panel |
| 15 | 40045C | Hex Nut |
| 16 | 28291C | Regulator Mounting Bracket |
| 17 | 28281C | Lower Panel |
| 18 | 70683C | Union - 1/4 |
| 19 | 56092C | Poly Tubing (Cut To Length) |
| 20 | 45769C | Drain - Tail Pipe |
| 21 | 45805C | Drain Adapter |
| 22 | 50074C | Gasket - Tail Pipe |
| 23 | 100322740560 | Gasket |
| 24 | 45736C | Nut-Regulator Mounting |
| 25 | 70023C | Set screw - #6-32 x .12" |
| 26 | 56280C | Edge Trim |
| NS | 111577243890 | Screw - Mach 5/16-18 x 3/4 |
| NS | 111577343890 | Nut - Hex 5/16-18 |

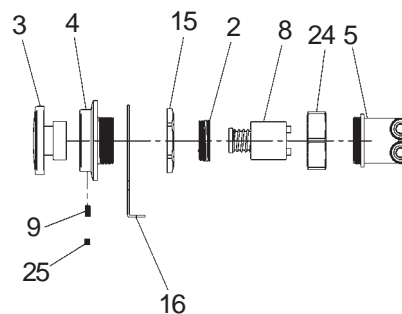


FIG. 5

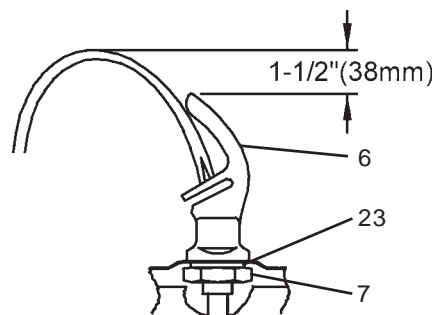


FIG. 6

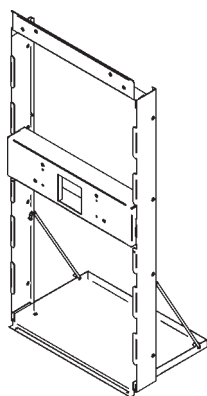
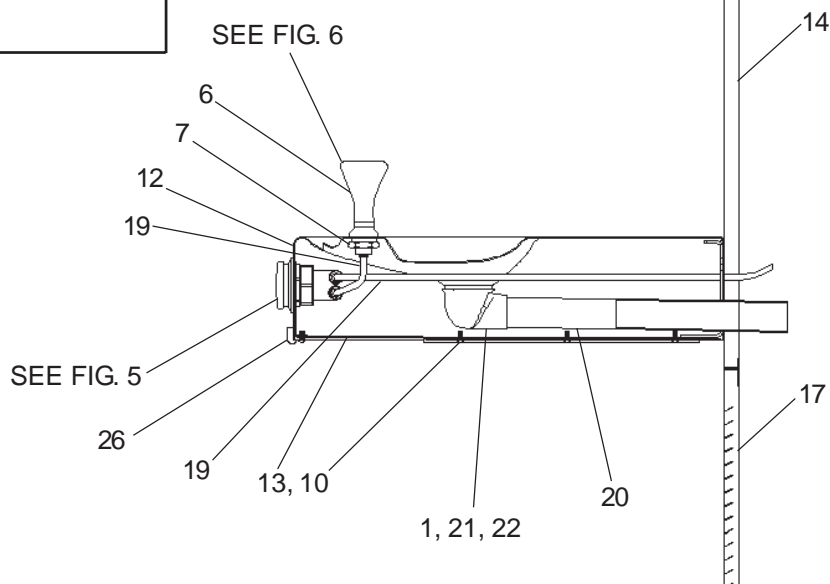


FIG. 8

FIG. 7



Halsey Taylor
 2222 CAMDEN COURT
 OAK BROOK, IL 60523
 630.574.3500

REPAIR SERVICE INFORMATION TOLL FREE NUMBER 1.800.260.6640
 FOR PARTS, CONTACT YOUR LOCAL DISTRIBUTOR OR CALL 1.800.323.0620

PRINTED IN U.S.A.