



# **AQUAPOINTE MW12EBFY** ■ Contactless, Refrigerated **AQUAPOINTE MW8EBFY** ■ Contactless, Refrigerated **AQUAPOINTE MWEBFY** ■ Contactless, Non-Refrigerated Bottle Filler

## AquaPointe MW12EBFY

Delivering 90LPH of 10°C water at 21°C ambient.  
Cooling system uses R-134a refrigerant.

## AquaPointe MW8EBFY

Delivering 60LPH of 10°C water at 21°C ambient.  
Cooling system uses R-134a refrigerant.

## AquaPointe MWEBFY

Delivering ambient drinking water.

These fully recessed mount, bottle fillers include an electronic sensor for a contactless (touch free) activation and a 30 second shut off timer. The Bottle Counter conveniently displays the number of times the unit has been used, encouraging the refill of sports bottles.

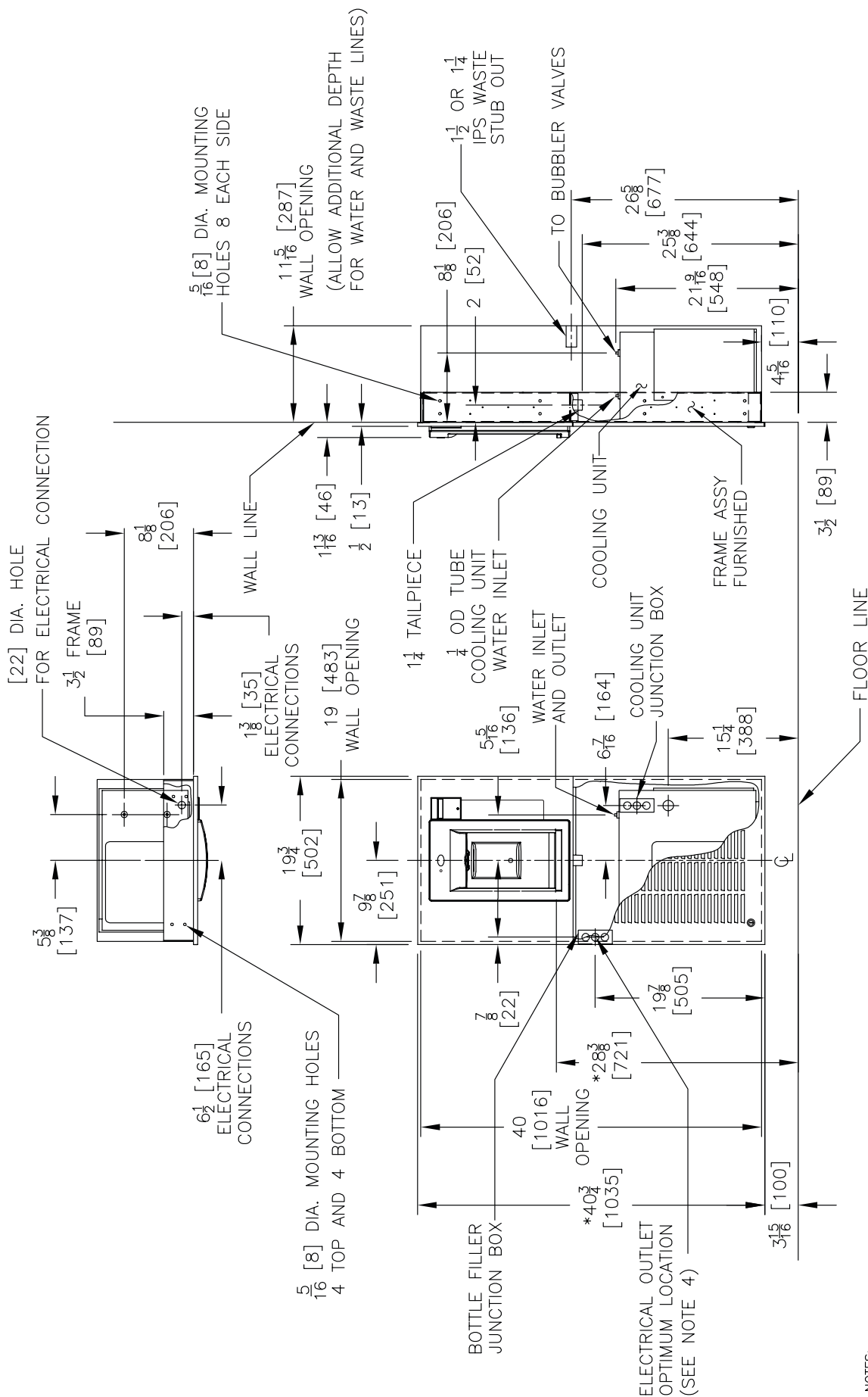
Key AquaPointe moulded components shall contain Freshield, which utilises a silver-based antimicrobial compound that reduces the growth of micro-organisms and mildew to protect the surfaces from discolouration, odours and degradation.

Complies with ANSI A117.1 and ADA. Shall comply with all relevant CE directives (LVD , EMC, RoHS). Shall comply with ANSI/NSF 61.

Suitable for public building, gymnasiums, sports complexes, hospitals, schools, and offices.



MODEL CODE	MW12EBFY	MW8EBFY	MWEBFY
ACTIVATION	Contactless (Infrared sensor)		
SENSOR COVERAGE	Up to 5cm (approx.)		
FILTRATION	Green Filter (optional), Built-in 100 micron strainer		
DISINFECTION	-		Quasar UVC-LED (Optional) (MWSMEBQY)
AUTO-OFF WATER FLOW	Yes		
DRAINAGE TYPE	Built in drain, Removable drip tray		
EXTERIOR CHASSIS	Antimicrobial ABS Plastic, Brushed Stainless Steel		
DIMENSIONS	1035(H) x 502(W) x 46(D) (287recessed) mm		
ALCOVE HEIGHT	265 mm		
NET WEIGHT	35 kg		12 kg
POWER SUPPLY	220-240V, 50/60 Hz		
COOLING PERFORMANCE	90 LPH Rated Capacity & Base Rate (10°C in 21°C amb. temp.)	60 LPH Rated Capacity & Base Rate (10°C in 21°C amb. temp.)	Non-Refrigerated
FULL LOAD AMPS	3.7A	2.2A	0.1A
RATED WATTS	627 W	347 W	7 W
COUNTRY OF ORIGIN	Mexico		
CERTIFICATIONS	ANSI/NSF 61, CABO/ANSI A117.1, ADA, CE (LVD, EMC, RoHS) , WRAS		
WARRANTY	1 Year		



NOTES:

- \*1. RECOMMENDED ADULT HEIGHT INSTALLATION SHOWN. ADJUST VERTICAL DIMENSIONS AS REQUIRED TO COMPLY WITH FEDERAL, STATE AND LOCAL CODES.
2. STOP VALVE, TRAP, PIPE CONNECTOR TO WASTE LINE NOT PROVIDED. SHORT RADIUS TRAP REQUIRED.
3. ALL DIMENSIONS ARE IN INCHES. DIMENSIONS IN BRACKETS [ ] ARE IN MILLIMETERS.
4. 115V GROUNDED NORTH AMERICAN DUPLEX RECEPTACLE REQUIRED. THIS DRINKING WATER COOLER IS INTENDED TO BE CONNECTED TO A 20A MINIMUM GROUND FAULT CIRCUIT INTERRUPTING (GFCI) DEVICE TO MEET UL REQUIREMENTS.



www.oasis.ie  
www.oasisbottlefillers.com  
info@oasis.ie

**OASIS IRELAND**  
Bunree Industrial Estate, Ballina,  
Co. Mayo, F26 D5R3, Ireland.  
+353 96 71222

**OASIS POLAND**  
ul. Gutenberga 20,  
44-164, Gliwice, Poland  
+48 32 332 65 01

