



Halsey Taylor
Satisfying Thirsts Since 1912

Vandal-Resistant Indoor/Outdoor

Wall-Mounted Barrier-Free Cooler



Stainless Steel Finish Only

Optional Accessories (extra cost)

- ☐ Water Filter**
- ☐ Frost-Resistant Model
(factory installed only - HVR8FR-CHILD ADA)
- ☐ 220-240V 50 Hz
- ☐ 220-240V 60 Hz
- ☐ Louver Screens

** Water filter option not available for frost-resistant models

JOB NAME: _____

ENGINEER/CONTRACTOR NAME: _____

APPROVAL: _____

DATE: _____

MODEL: ☐ HVR8 ADA
☐ HVR-L/R ADA



This water cooler is certified to
NSF/ANSI 61.

GENERAL

Self-contained, electric refrigerated wall-mounted water cooler designed to be easily accessible to physically challenged individuals. When properly installed, unit meets state and federal requirements as defined by the Americans with Disabilities Act **for both children or adults.** Unit is certified to NSF/ANSI 61, and meets requirements of the Safe Drinking Water Act. Unit provides 50° F water at 80° F inlet water and 90° F ambient. **Unit is UL listed for indoor and outdoor service.**

CABINET

Stainless steel panels resists wear and corrosion. Durable satin finish helps hide water spots and fingerprints.

COOLER TOP

Non-corrosive stainless steel cooler top, number 300 series with satin finish resists stains and corrosion and is easy to maintain. Anti-splash ridge reduces splatter. Contoured to insure proper drainage.

BUBBLER

Vandal-resistant bubbler is one-piece, chrome-plated. Unit has integral hood guard design to prevent contamination from other users, airborne deposits and tampering.

PUSHBUTTON ACTUATION MECHANISM

Self-closing, vandal-resistant pushbutton does not require grasping or twisting.

AUTOMATIC STREAM HEIGHT REGULATOR

Self-closing assembly is located inside unit to prevent tampering. Unit resists corrosion and liming. A constant stream height is automatically maintained under line pressures that vary from 20 to 105 psi.

INLET STRAINER

Easily cleaned in-line strainer screen traps particles of 140 microns or larger before they enter the waterway.

TEMPERATURE CONTROL

Positive sensing thermostat for controlling temperature of storage tank water. Factory set at 50° F Adjustable $\pm 5^\circ$ F.

STORAGE TANK

Non-pressurized stainless steel evaporator/storage tank for long life. Waterways are certified to NSF/ANSI 61, far exceeding the requirements of the Safe Drinking Water Act.

REFRIGERATION SYSTEM

Hermetically sealed, positive start compressor with lifetime lubrication and built-in overload protection, efficient capillary sizing, large capacity dryer-strainer, and self-lubricated fan cools copper/aluminum condenser. System uses R134A refrigerant. Protected by Halsey Taylor's Limited 5 Year Warranty.

VENTILATION

Insure proper ventilation by maintaining 6" (152mm) minimum clearance from cabinet louvers to wall.

SUGGESTED SPECIFICATIONS

Shall deliver 7.8 GPH of 50° F water at 90° F ambient and 80° F inlet water. Shall have stainless steel basin with removable drain strainer. Bubbler shall be one-piece, vandal-resistant. Separate valve and automatic stream regulator shall be mounted within cabinet. Refrigeration system shall employ high efficiency, positive start compressor using R134A, non-pressurized tank with totally encapsulated insulation and be controlled by positive sensing thermostat. Unit shall comply with ANSI 117:1 and ADA for visual and motion disabilities. Unit shall be UL listed for outdoor service. The manufacturer shall certify the unit to meet the requirements of NSF/ANSI 61, and the Safe Drinking Water Act. Unit complies with ARI Standard 1010.

NOTE: Continued product improvement makes specifications subject to change without notice. See Halsey Taylor website for most current spec sheet.

HRV BARRIER-FREE SERIES

Model No.	GPH Capacity Cooled to 50° F*				Base Rate Cap.	F.L. Amps	Shipping Weight lb.	Rated Watt Usage
	Ambient Air Temp							
	70°F	80°F	90°F†	100°F				
HVR8 ADA	9.4	8.6	7.8	7.0	7.8	4.0	66	370
HVR8FR ADA	9.4	8.6	7.8	7.0	7.8	6.2	68	620
HVR8 ADA 220-240V 50 Hz	7.9	7.2	6.5	5.9	6.5	2.0	66	370
HVR8 ADA 220-240V 60 Hz	9.4	8.6	7.8	7.0	7.8	2.0	66	370

* With projector service and tap water at 80° F

† UL listed and complies with ARI Standard 1010

Trap and service stop not included



halseytaylor.com

HALSEY TAYLOR, 2222 CAMDEN COURT, OAK BROOK, ILLINOIS 60523

HVR8 ADA, HVR-L/R ADA

Vandal-Resistant Indoor/Outdoor Barrier-Free Cooler

(CONTINUED)

MOUNTING HEIGHT

Mounting height recommended 31¹³/₁₆" from basin to floor. May be mounted at any desired height. Check local codes.

MOUNTING INSTRUCTIONS

Mount trap and install service stop to supply line. Anchor hanger bracket securely to wall on all sides. To insure proper engaging of waste line into trap, centerline of trap must be 6¹/₄" from

wall face. Remove slip nut and gasket from trap and install on waste line tube. Hang cooler on bracket and engage waste line tube into trap inlet. Centerline height of waste outlet will vary from floor line depending on mounting height. Install ³/₈" supply tube to in-line strainer. Secure bottom of cooler to wall using holes provided.

Trap and service stop not included.

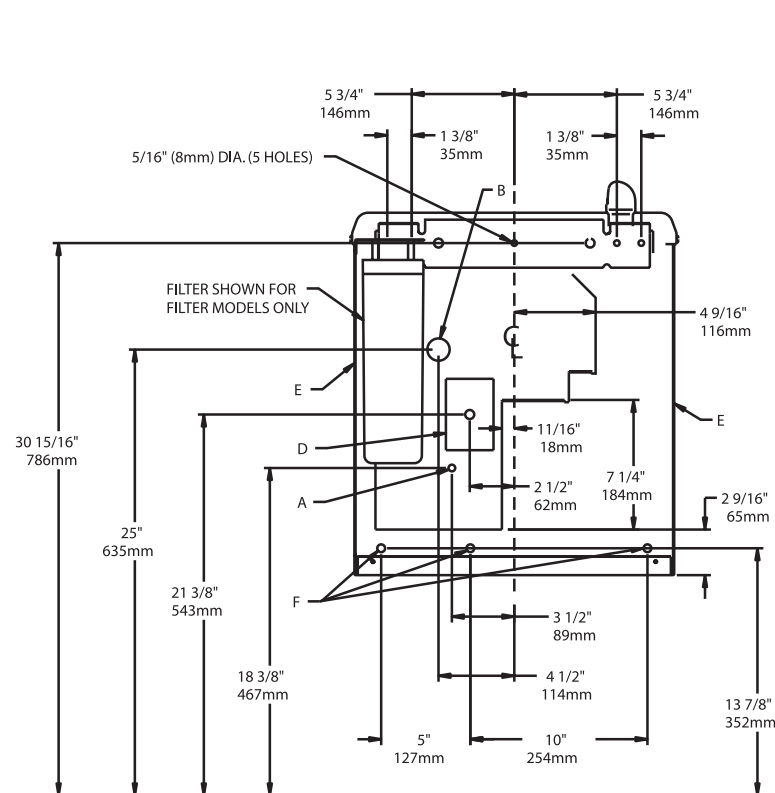
OPERATING PRESSURES:

Supply water - 105 psi maximum

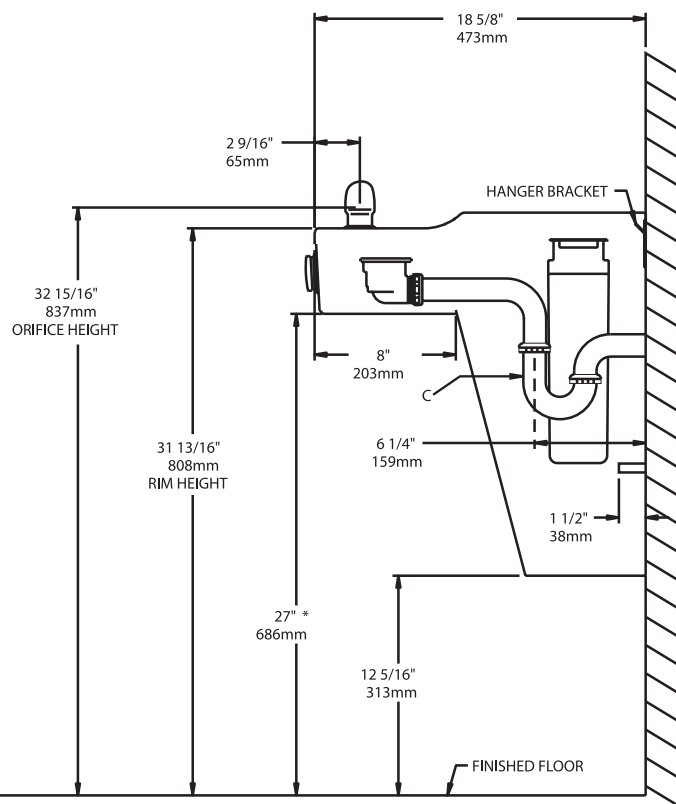
ELECTRICAL

230 Volt / 50 Hz units furnished with plug-in, 3 wire grounding type service cord. Standard 230 volt, 50 Hz, single phase. Install 230 volt receptacle rated at 15-amp minimum to receive 3-wire parallel blade grounding type male plug. 230 Volt units furnished with universal plug receptacle.

FRONT VIEW / WALL LAYOUT



SIDE VIEW



LEGEND:

A = RECOMMENDED WATER SUPPLY LOCATION. SHUT OFF VALVE (NOT FURNISHED) TO ACCEPT ³/₈" O.D. UNPLATED COPPER TUBE.

B = RECOMMENDED LOCATION FOR WASTE OUTLET 1-1/4" O.D. DRAIN

C = 1-1/4" TRAP NOT FURNISHED

D = ELECTRICAL SUPPLY (3) WIRE RECESSED BOX

E = INSURE PROPER VENTILATION BY MAINTAINING 6" (152 mm) (MIN.) CLEARANCE FROM CABINET LOUVERS TO WALL.

F = 5/16 BOLT HOLES FOR FASTENING UNIT TO WALL

* Adult ADA requirement. 24" (608mm) for child ADA. Adjust other measurements accordingly.

Halsey Taylor®